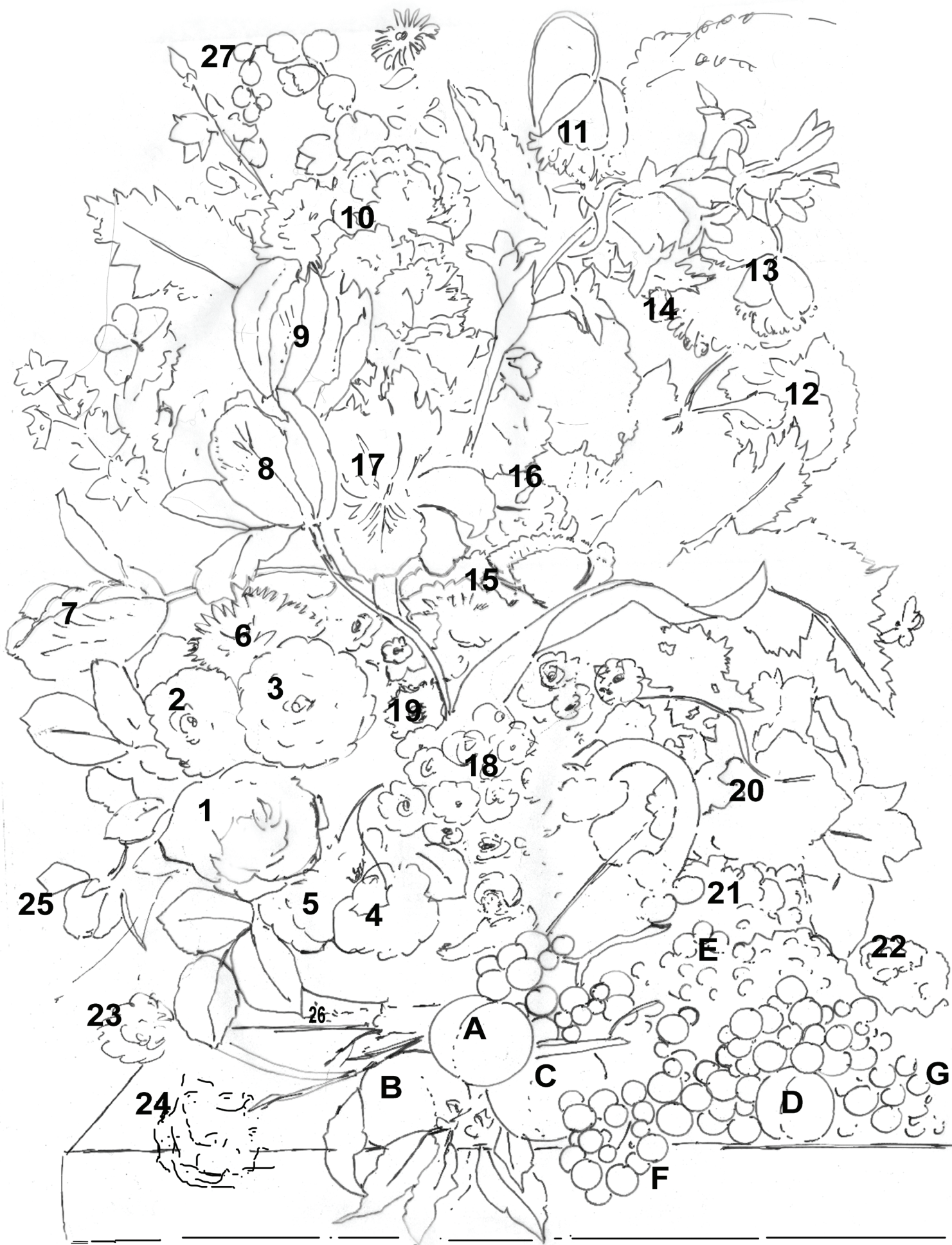


Dutch Masters

Lesson 12- Color Washes in the Tulips and Iris







Step 1 Mix a glazing color of black, touch Red Violet and maybe touch blues. Give surface a light even coat of Extender Medium. Glaze on the dark color to push back some of the back-ground, going over edges of the flowers.



Step 2 Mix together Raw Sienna + Touch Yellow Oxide and Hansa to make a toned glazing yellow. Using a small flat wash this over the area where the back leaf will be. We will make the leaf, but keep it simple for now.



Step 3 After you put in the leaf, glaze some of the color over the flower behind the center white flowers. Flower 6. As with the last lesson we will just suggest these areas and work more on them after we finish the forward flowers.



Step 4 Lighten the yellow with a little white and add some Indian Yellow for difference. Begin to set some petals in flower 6. Watch how light you make them. Keep it a little dark so it goes behind the white flowers.



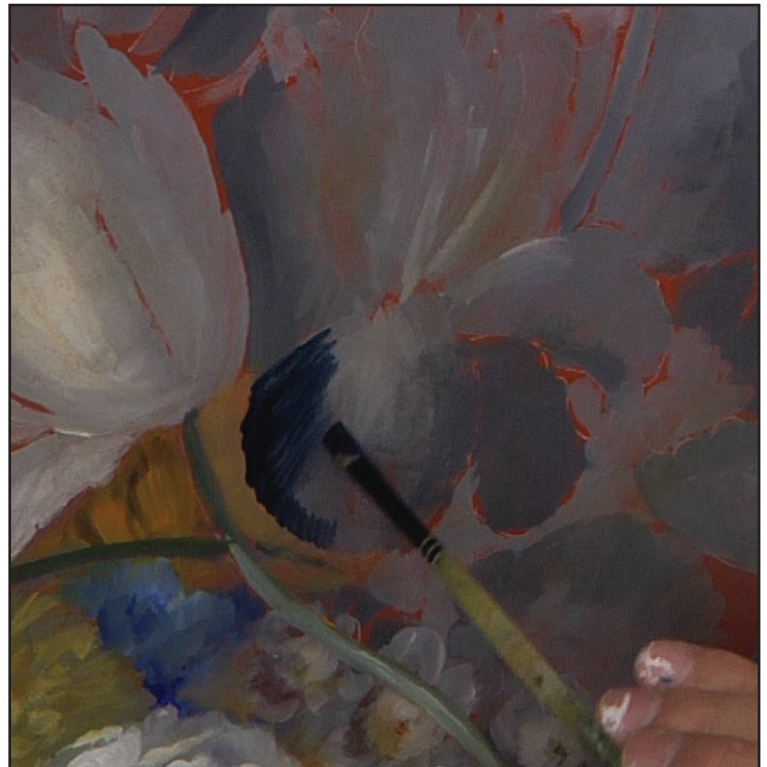
Step 5 Add a touch of reds to the yellows and then stroke in behind flower 6 to give some flower movement in the back area. Go over the stems and the put them back on after.



Step 6 Brush mix both blues with touch white. Mottle on brush so you get some variation and then add the blue area behind the white flowers. Keep simple for now. We will add more later.



Step 7 Clean up the stems with a thin wash of yellows and then blues. Add some of the blues behind them and under the tulips as suggestions of green leaf movement.



Step 8 Mottle the brush with the blues and touch black to darken. Using a small flat, apply the edge of the iris with the dark blues. Use the chisel of the flat in a sweeping motion in and out of the petal to make the center. See video.





Step 9 Add some light to the center of the iris petal, pulling out towards the tip to make the movement. Mottle the brush with more blues and add the right side of the petal pull out with the flat of the brush.



Step 10 Mottle the blues and the black and wash a thin layer over the side petals and then some additional color on the edges and in the center.



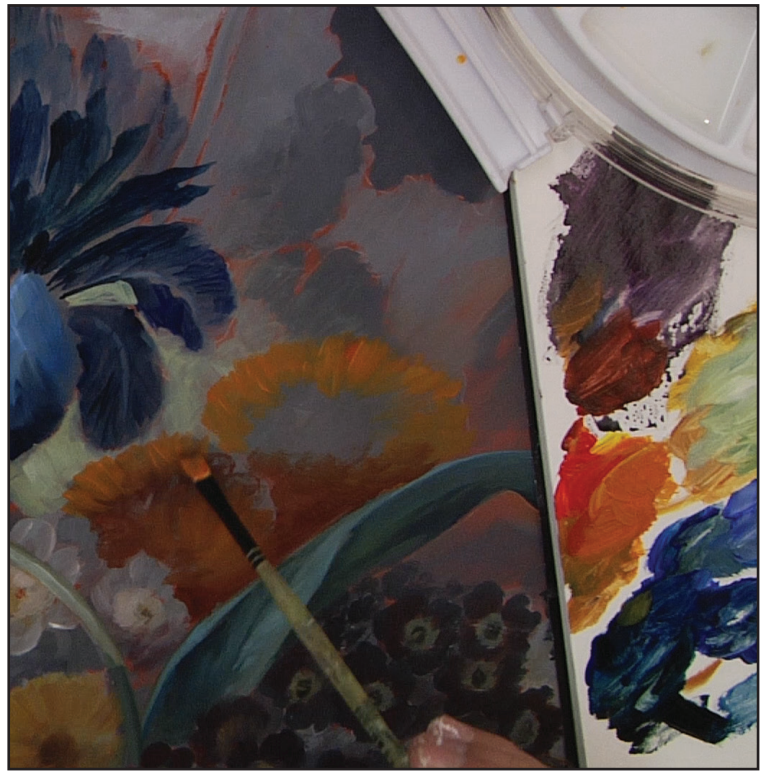
Step 11 Slowly keep adding the petals to the iris. I used the chisel of the brush to create smaller movements of the colors and create the visual vein lines in the petals.



Step 12 Add some very dark color on the left side next to the tulips and pull the colors towards the center of the iris to create the movement. Add some thin blues in the back to create softer colors.



Step 13 Keep adding the smaller petals and creating the movement with the chisel of the brush and darker blues. Keep them a little lighter, thinner and softer in the back.



Step 14 Mottle some oranges and then start flower 15. Pull the petal movement in towards the center of the flower. Then mottle the color a little darker with some violets and reds and add some darks into the center.



Step 15 Wash behind those flowers with some yellows and then blues to make the greens like we have done in other areas. Just add the color and the movement for now. We will add more later.



Step 16 Wash the large tulip # 8 with some yellows to warm the color than use some values just a little lighter than the colors there now to begin to add the streaks. Pull a center vein line first, then add some strokes to the vein line.



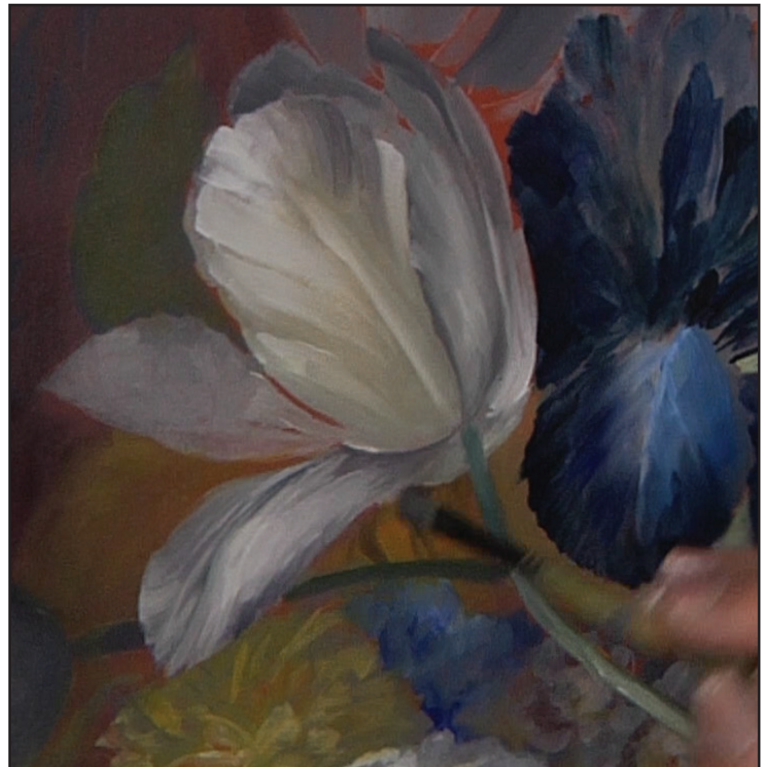
Step 17 Continue working the tulip. To start we will just add some movement to the petals. Later we will separate petals more. Look for movement first. That establishes good form, then look for the details.



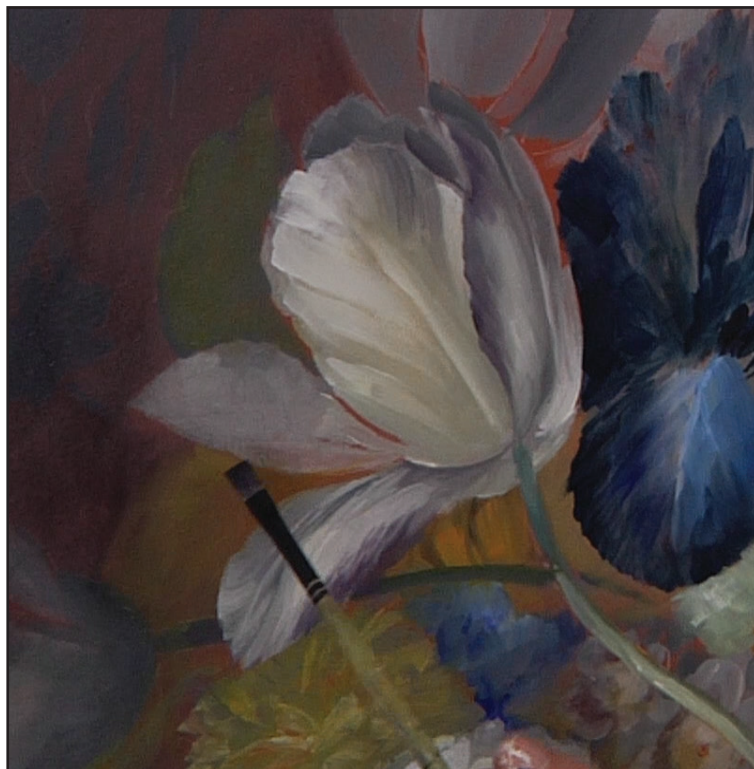
Step 18 Add some shadows to the tips and then streak in some lights. Use the flat and the chisel of the brush to add the streaks and movement. It is very important you concentrate on movement.



Step 19 Add the center vein line to the petal and then using slightly lighter color, add the movement of the petal veins to the vein line. Leave some streaks. Later we will do more with the smaller brushes.



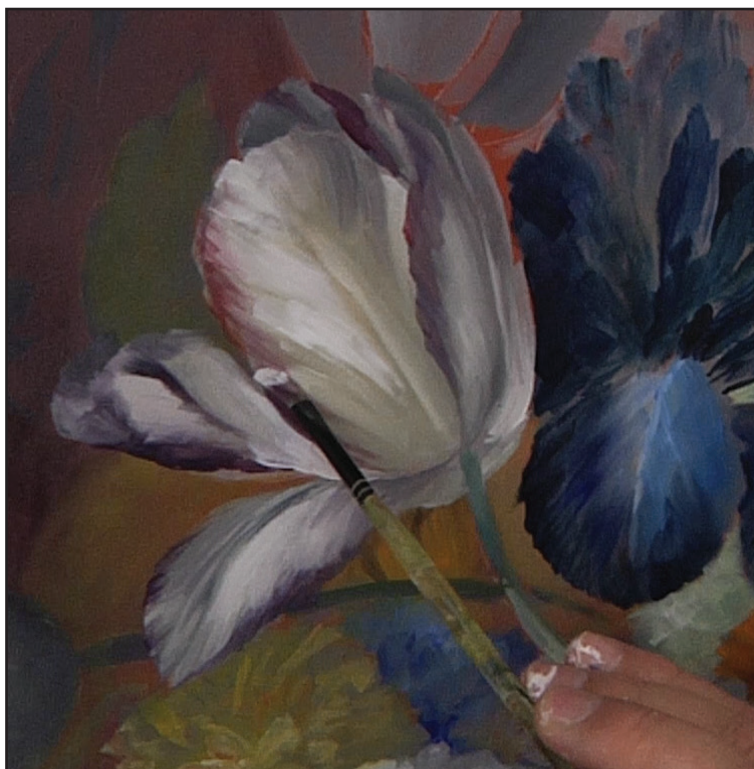
Step 20 Work the light and dark. Reinforce the shadows where the petal goes under the main body of the tulip.



Step 21 Keep refining the petals, adding more darks to the ones on the right. Slowly add the streaks and movement. We will build more in just a little bit.



Step 22 Add the dark tips to the petals. Use some reds and blacks. Then add more light at the base of the tulip. Work slowly and always say to yourself that we will come back later. Don't push too far. Work in layers, not for a completed look.



Step 23 Add some additional reds to the tips of the center petal, then add additional streaks of color with lighter values. Switch between the flat and the chisel of the brush as you make the streaks. This gives more interest.



Step 24 Add more lights at the base of the tulip center petals and some additional streaks in the center following the contours established by the center vein line.





Step 25 Wash flower #7 with some warm yellows and then begin to streak the petals with the lighter greys. Just a little lighter than what you have there now.



Step 26 I curved the petal on the top by using short strokes of grey. I then added some shadows to the base of the tulip with darker grey and black.



Step 27 Add the center vein line to the center petal that will establish the movement. Then flow the strokes and streak to and from that center line.



Step 28 Slowly refine the petals and the movement using the final photos for suggestions. This is the same technique we did on the last tulip, and we will use this on the next ones as well.



Step 29 Add some blues and greens to the objects behind the tulips. As before, we are just looking for some color movement at this time, we can not paint the details until we finish more in the front flowers.



Step 30 Add some light blue green to the tips of the leaves. I am softening it here with my finger so I do not create too much interest at this time. These are the leaves I feel that have become fugitive in color.



Step 31 Add the darker red tips to the tulips in area 9. We will just look for some movement at this time and will separate them into two tulips later. Follow the contours and use the same techniques as we did on the other 2 tulips.



Step 32 Add some light color to the tulips after the center vein line. When adding the light streaks keep an eye on the front tulip and make sure you keep the lights lower in value than the front one, so these 2 sit behind. Enjoy!

Grisailles

If you want to mix your own greys that are shown in this video, please use the chart below. Please note, these mixes ratios are for Heritage colors and will not work with other brands due to the amount and quality of pigments.

Mixes- Use the following ration.. For example Value 6 would be 8 parts White to 1 part Black.

Value 1- Carbon Black	Black (PBk7)
Value 3- Dark Grey Value 3	PBk 7 (2) + PW6 (1)
Value 6- Medium Grey Value 6	PBk 7 (1) + PW6 (8)
Value 8- Light Grey Value 8	PBk 7 (1) + PW6 (30)
Value 10- White	PW6