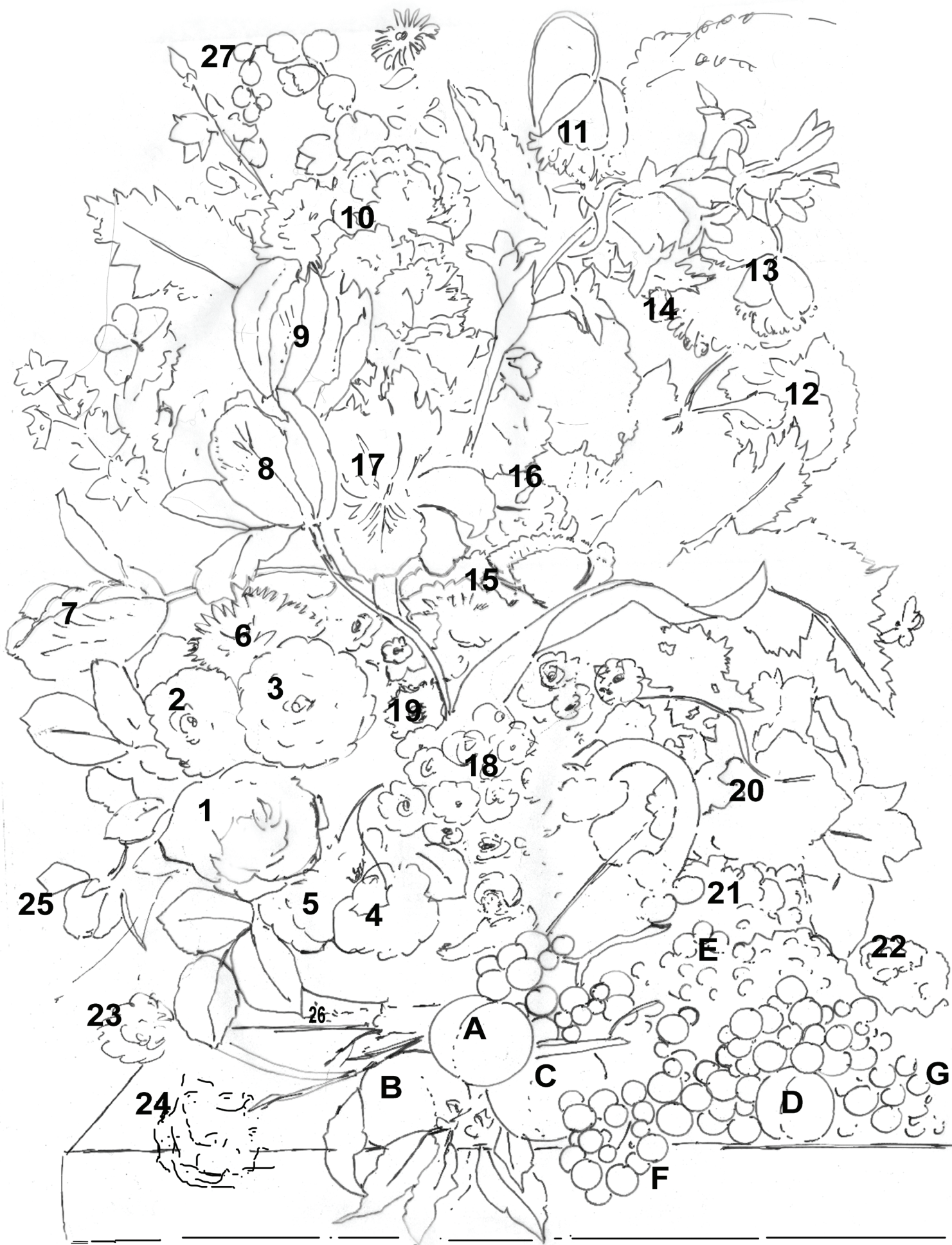


Dutch Masters

Lesson 4- Advancing the Grisaille







Step 1 Flower 8-
Keep the tulip mostly value 10 to value 8 for some roundness. A little darker on the sides. No streaks or texture. Please keep the textures flat for later glaze layers.



Step 2 Flower 7-
Keep the values around 6 or 7 in the center area. Make it a little darker on the sides and shadow for roundness. Almost 3 on bottom side petal.



Step 3 Flower 2-
Start this one with 9 or 10, darken a little on the sides for roundness.



Step 4 Flower 6-
Base the leaves on the left as dark as the tulip. Light would be about a 7. The flower (6) will be about value 6 with a little darker on the sides.



Step 5 Flower 24 and 23-
Paint into the crescent shape. Paint carnation in as 8 with roundness to about 3 then the back flower 23 as a value 3. Add the leaves like the carnation. Light to support crescent shape.



Step 6 Under Flower 3-
Add light value, almost 9 and 10 under flower 3 and above flower 5. Then add very dark form shadow under flower 3, value 2 or 3.



Step 7 Flower 1-
Restate some light colors to 10 on the front flowers. We revisit these flowers several times. No texture as usual.

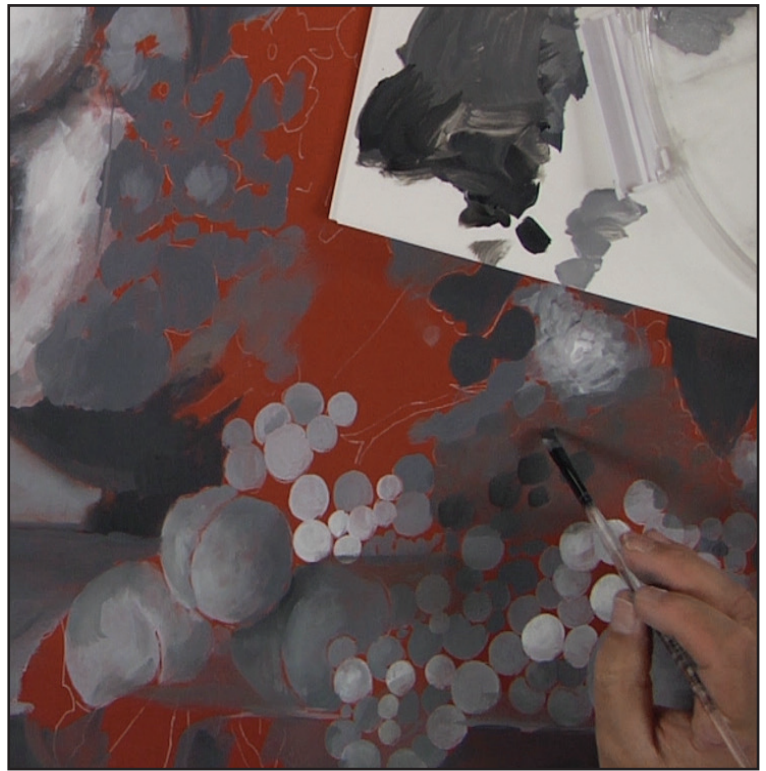


Step 8 Vase-
Add very dark in value 3 to 1. This will push the flowers forward. We will adjust with glazes later. Then add some light value behind the vase. About 6 or 7.



Step 9 Table edge-

Add the table edge with the large brush. Shadow the back of the table or plinth. Front 7 or 8 and the back around 5. Front side of the plinth a little darker.



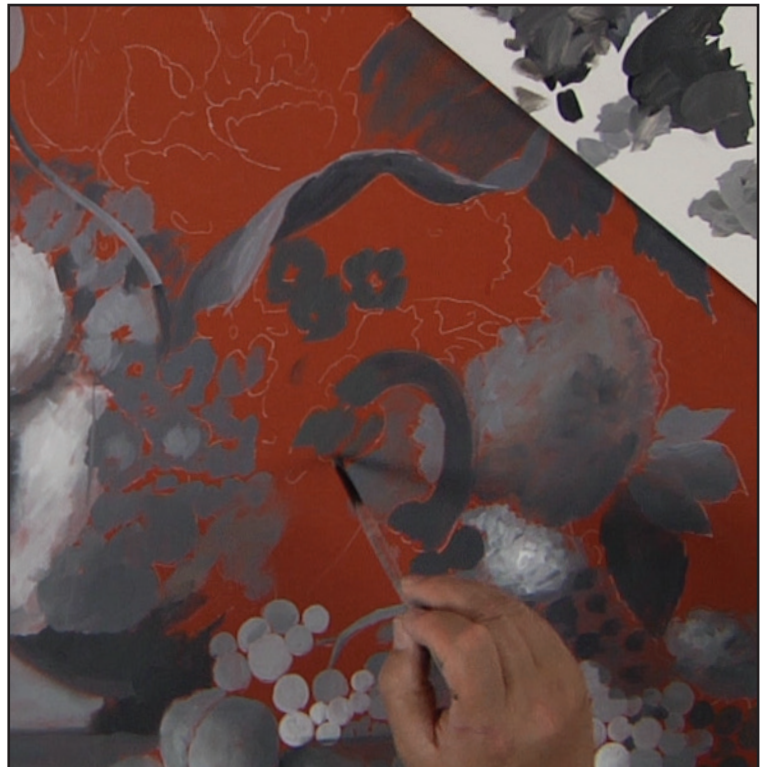
Step 10 Back Grapes

Add some color to the back grapes with the large brush using 3 or 4 and then using the smaller brush add some darker grapes.

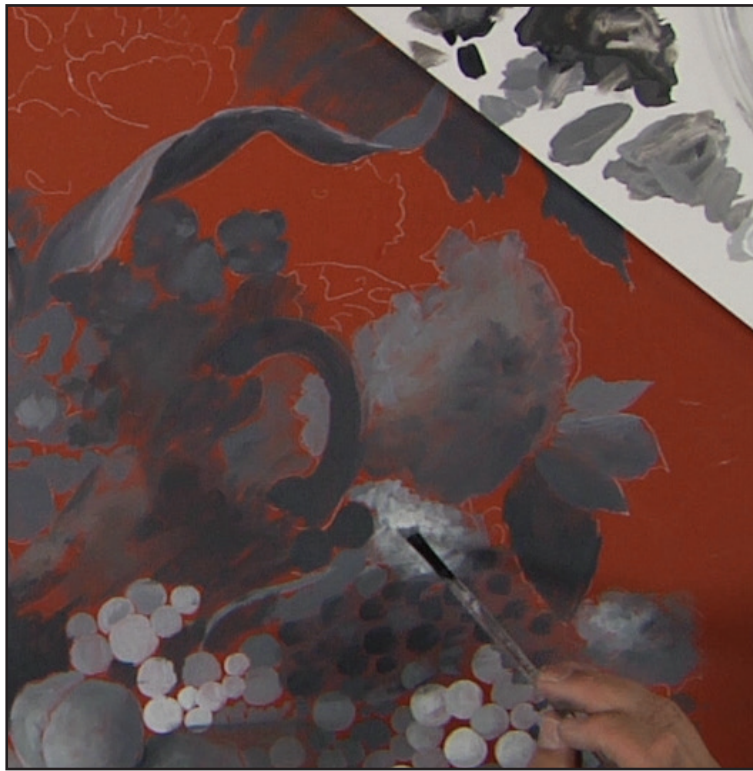


Step 11

Add some darker cast shadows under and between the peaches. About 2 or 3. These do not have to be perfect at this time.



Step 12 Add the light stem under the handle with 7 or 8, then begin the primrose and generally state them with a dark 2 or 3.



Step 13 Flower 21

Restate some light on the flower with 9 or 10 then set the other primroses in around it with about value 3.



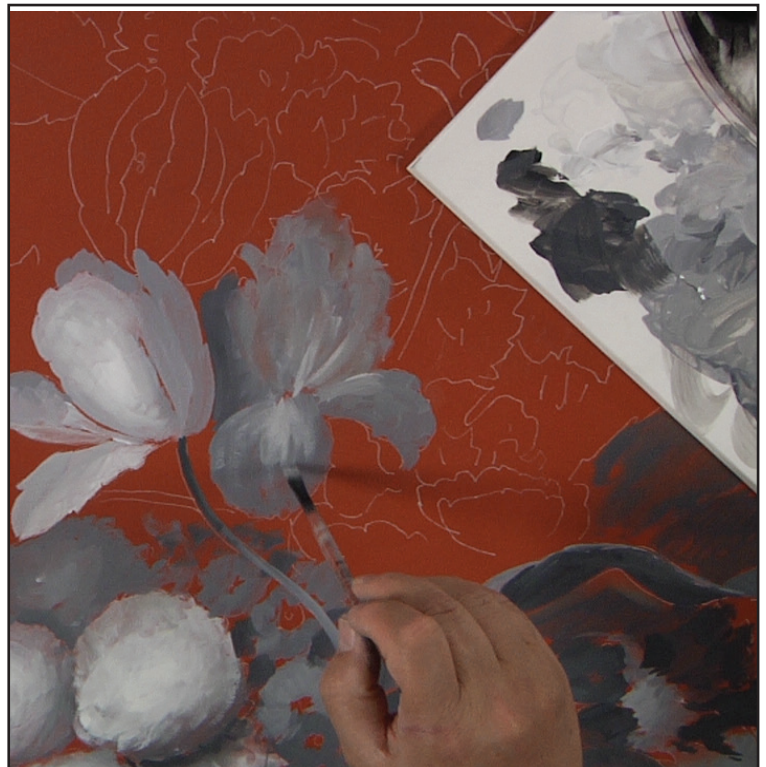
Step 14 Flowers 18

Actually flowers to the right of 18. Keep darker 3 or 2. No real details for now.



Step 15 Flower 17-

Add some dark, about 3 to the shadow between the iris and tulip, then make the body of the iris about a value 5.



Step 16 Flower 17-

Add some light streaks of value 8 or so into the iris. We will add more detail in this area later, this just helps add some streaks and lights moving out of the iris for interest.



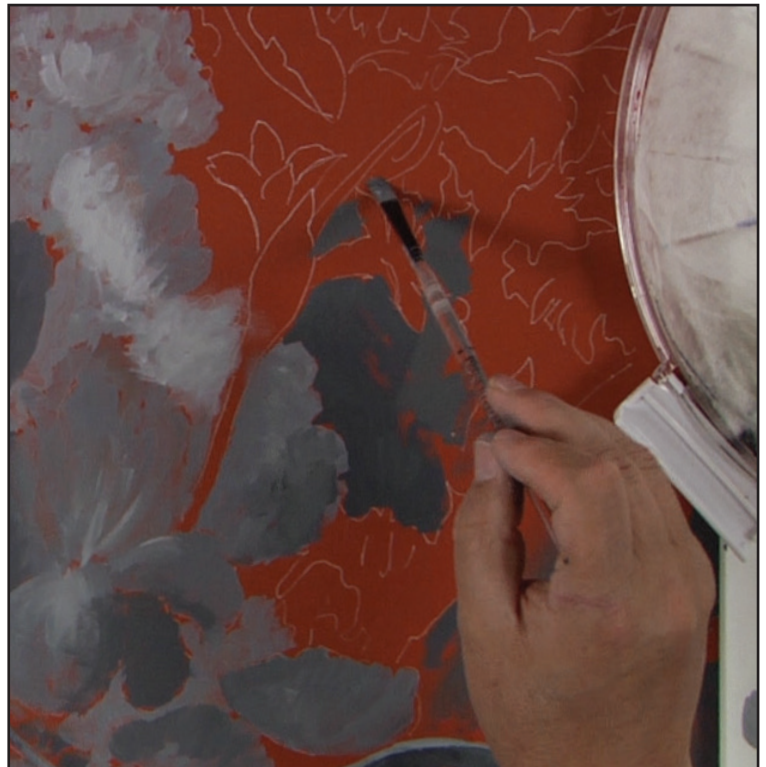
Step 17 Flower 9-
Base with around a value 8 and shadow the sides slightly darker to round them. Add some smaller flowers below the iris with a little darker color.



Step 18 Flower leaves 10-
Add this back lighter area with lighter 8 to 9 which will play against the iris and the tulip.



Step 19 Flowers and leaves 10-
Continue adding more light about an 8 or so on the top. Add some slightly darker value around a 6 or so to shadow for roundness.



Step 20 Flower areas 14- Dark Green Leaves
Add the front with about a 6 and then darken the back ones with some 3 and 4 values.



Step 21 Flower area 14-
Add a large light stem with about a value 7 or 8.
This will carry on to some of the flowers.



Step 22 Flower right of 8-
Add some value 6 to 5 in the smaller flowers on
the other side. Keep these simple.



Step 23 Flowers area 14
Add the flowers and flower buds starting and the
bottom and working up along the stem. Here I
start with about a value 8 to 9 to start. Add flow-
ers to right with 4 and 5.



Step 24 Flowers area 14
State the others flowers really quick without too
much detail with slightly darker values or 7 and 6.
Keep simple and quick allowing some orange to
show through.



Step 25 Flowers area 14-
Here is a photo of the completed flowers. Just make fast suggestions. Add the curved stem of the flower above them and the associated flower.



Step 26 Flowers 27
Add the buds on the top left with about a value 6. Keep simple and quick.



Step 27 Flowers 11
Add the top leaves with medium values and shadow the behind area to put behind. Add some smaller stems to fill in.



Step 28 Area A and C
Check your crescent shape. Here I am adjusting some value on the front areas to make the crescent shape come forward. Mostly 9's. Next lesson glazing and dimensional grisaille.

Grisailles

If you want to mix your own greys that are shown in this video, please use the chart below. Please note, these mixes ratios are for Heritage colors and will not work with other brands due to the amount and quality of pigments.

Mixes- Use the following ration.. For example Value 6 would be 8 parts White to 1 part Black.

Value 1- Carbon Black	Black (PBk7)
Value 3- Dark Grey Value 3	PBk 7 (2) + PW6 (1)
Value 6- Medium Grey Value 6	PBk 7 (1) + PW6 (8)
Value 8- Light Grey Value 8	PBk 7 (1) + PW6 (30)
Value 10- White	PW6