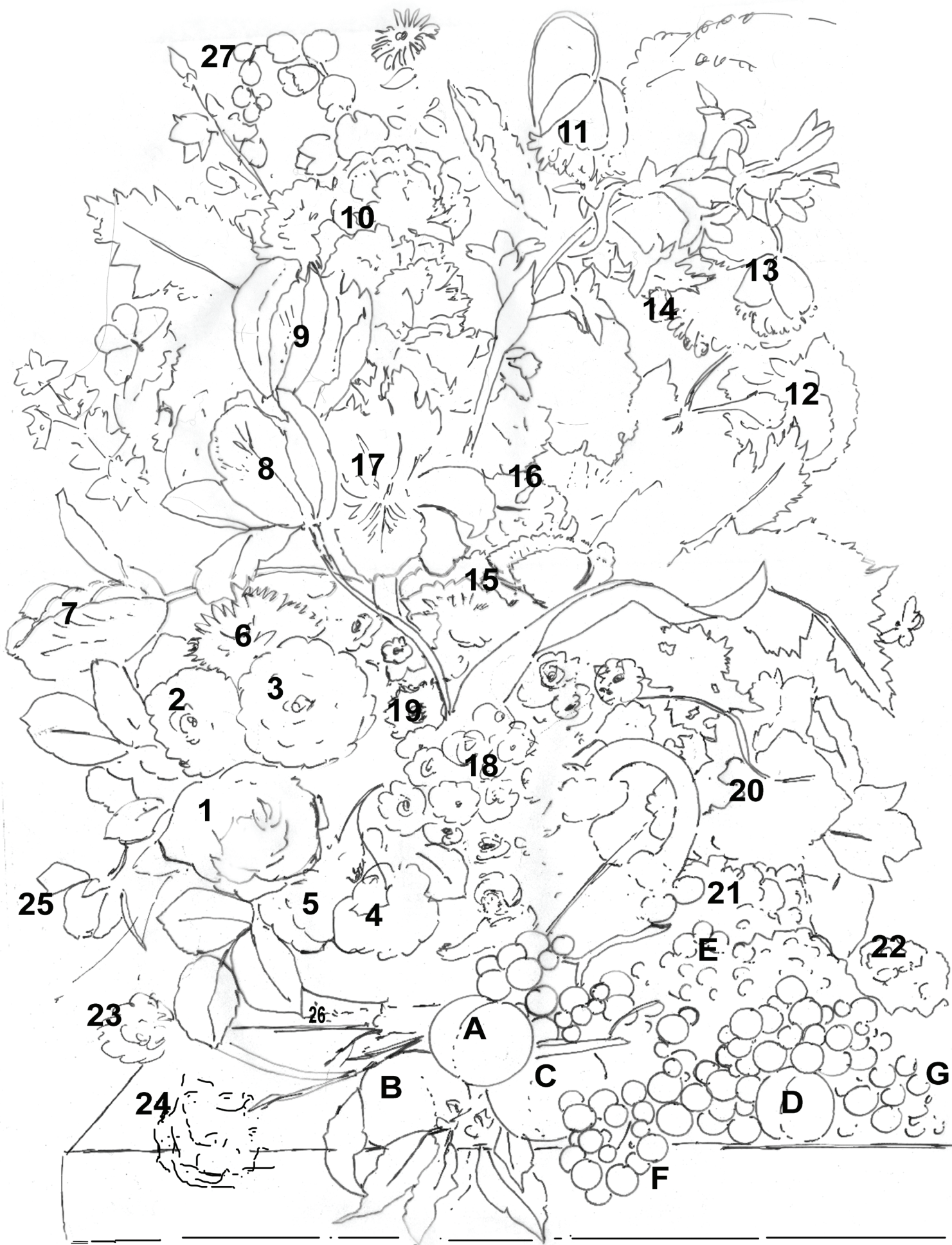


Dutch Masters
Lesson 7- Putti, Primroses







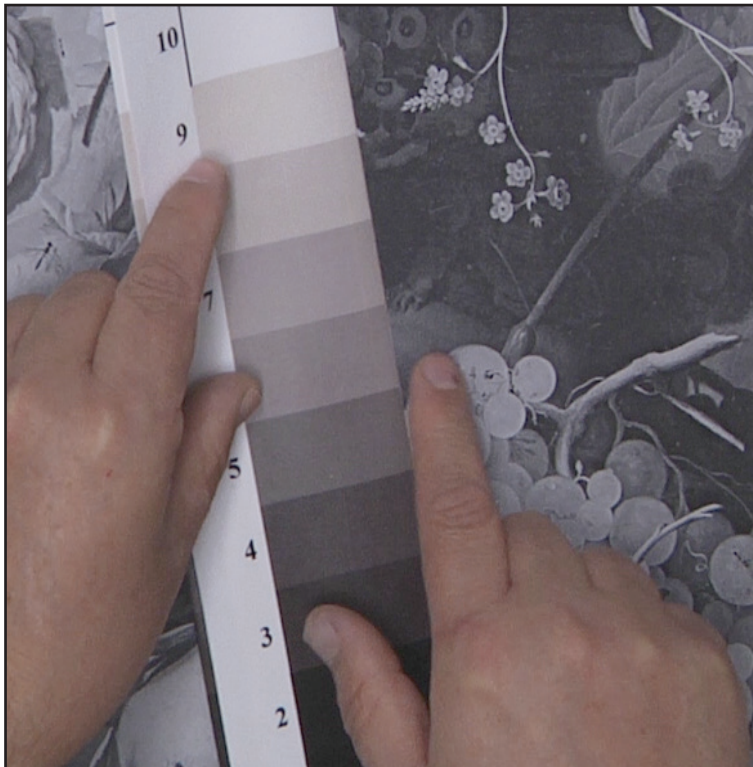
Step 1 Transfer Detailed Pattern

For this lesson I transferred the detailed pattern of the vase, putti and primroses (flowers 18). Transfer with light or dark, whatever shows best.



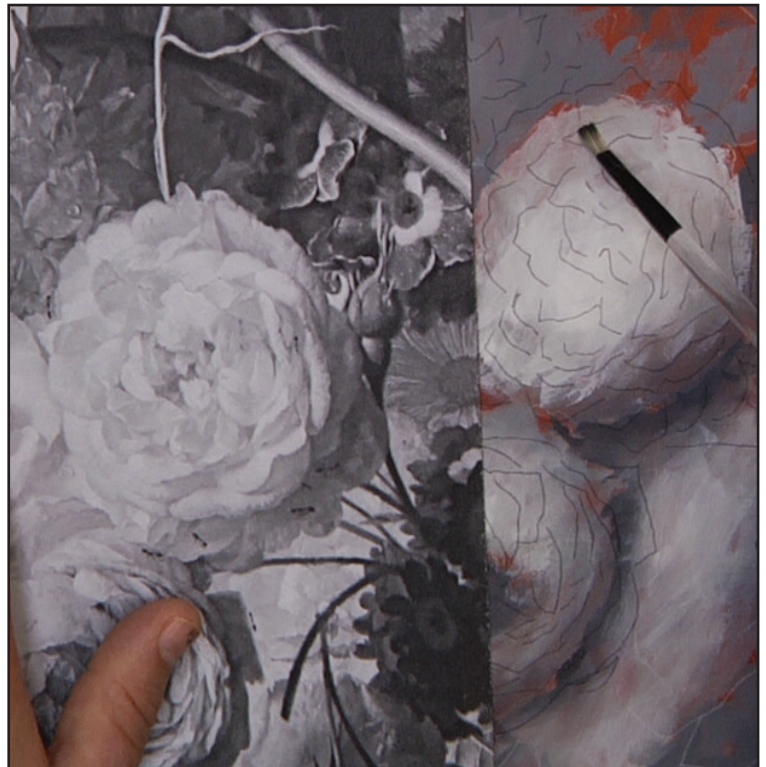
Step 2 Black and White

I printed out the Black and White detailed pattern of the putti on a copy machine so I could get a better idea of the values and details.



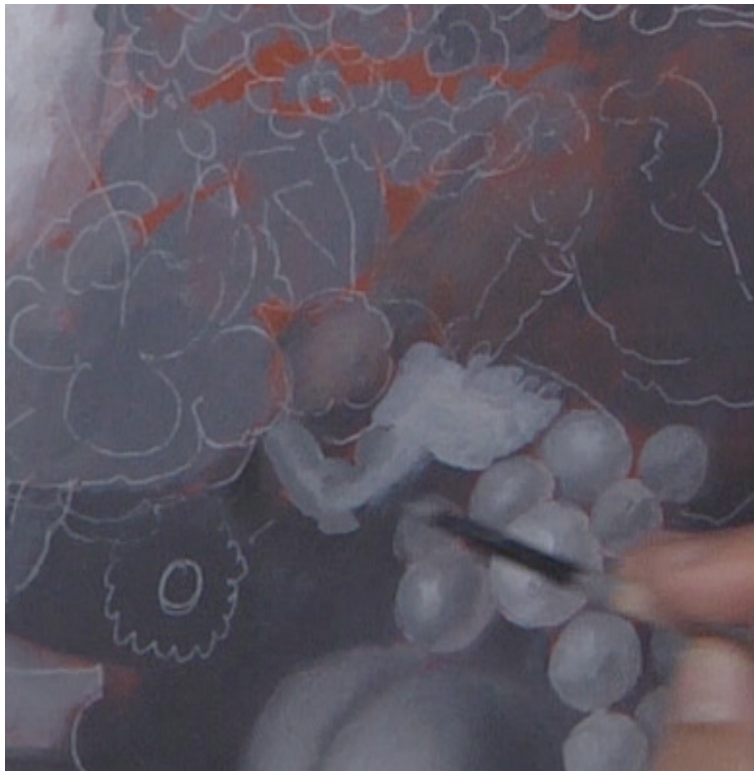
Step 3 Value Scale, Use values 1 through 6.

Check the lights and the darks for the area you will be working to get an idea for the values to use. I used values 1 through 6 for these areas.



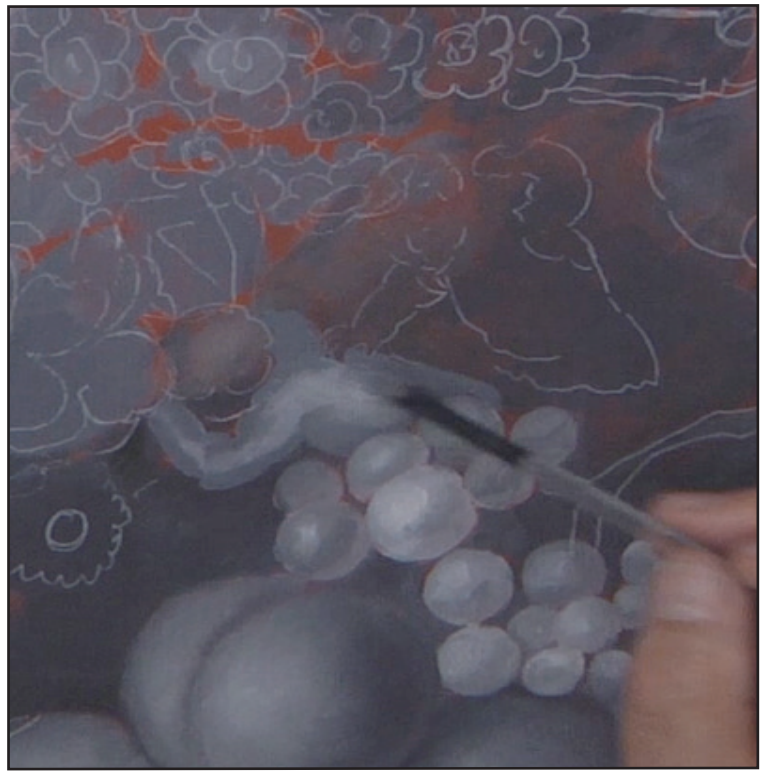
Step 4 Putti

Block in the main part of the body of the first putti with a value 6. Use any small brush you like, just paint without texture.

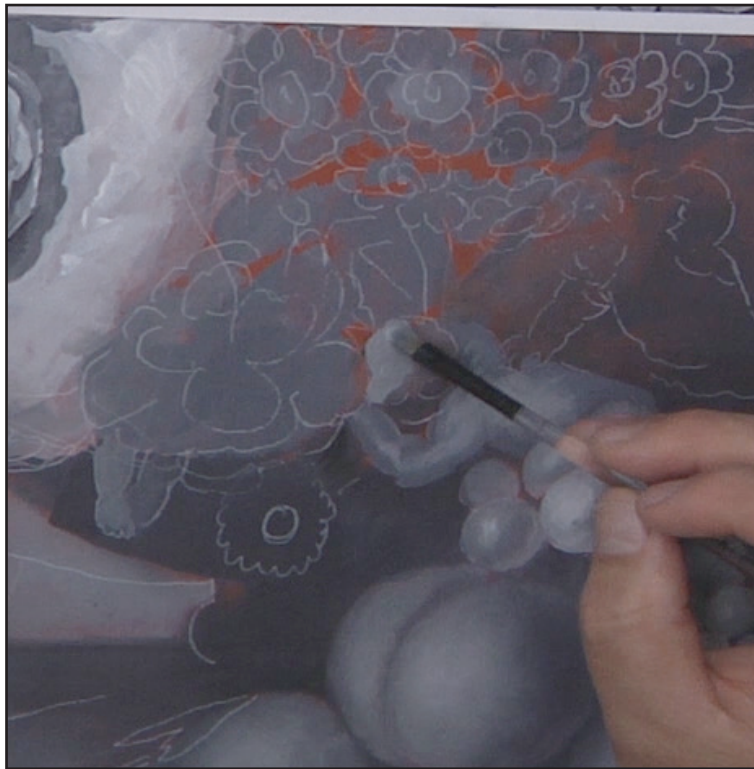


Step 5 Shadow for form

Base his body and arm with the 6 and then mix a shadow value with 3 and a little 1 to make a 2 and shadow the sides of his arm for roundness. No need for lots of details yet.



Step 6 Shadow down his back with the 2 leaving some of the 6 in the middle area as the highlight.



Step 7 Add the hair and the top of his head with the 6 mixed down with the 3 to about a value 4 or 5.

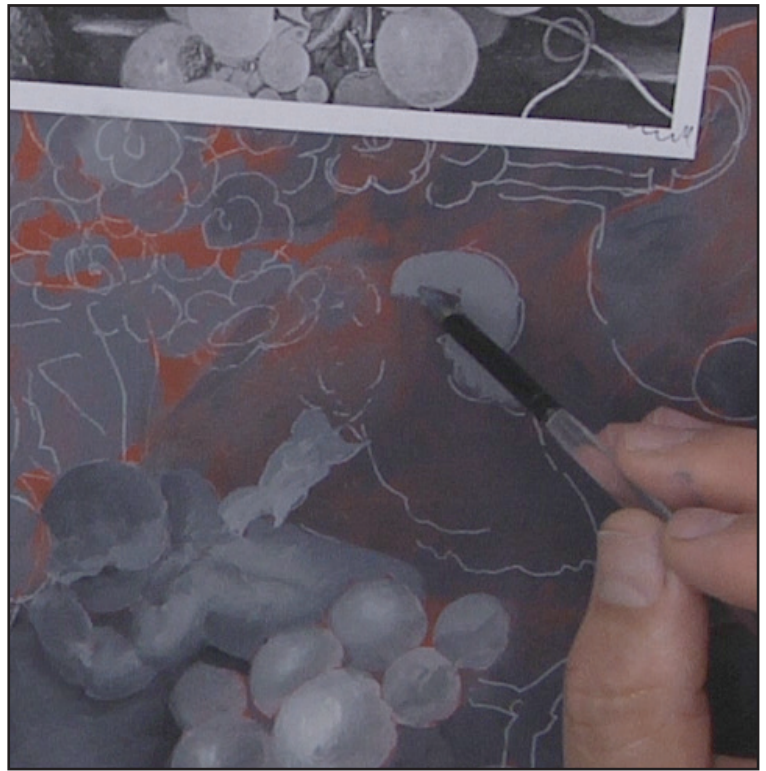


Step 8 Shadow the top of his head with a little 3 and touch 1. Base in the main part of the vase with a 3 and then darken it down with a little 1 and add some shadows.

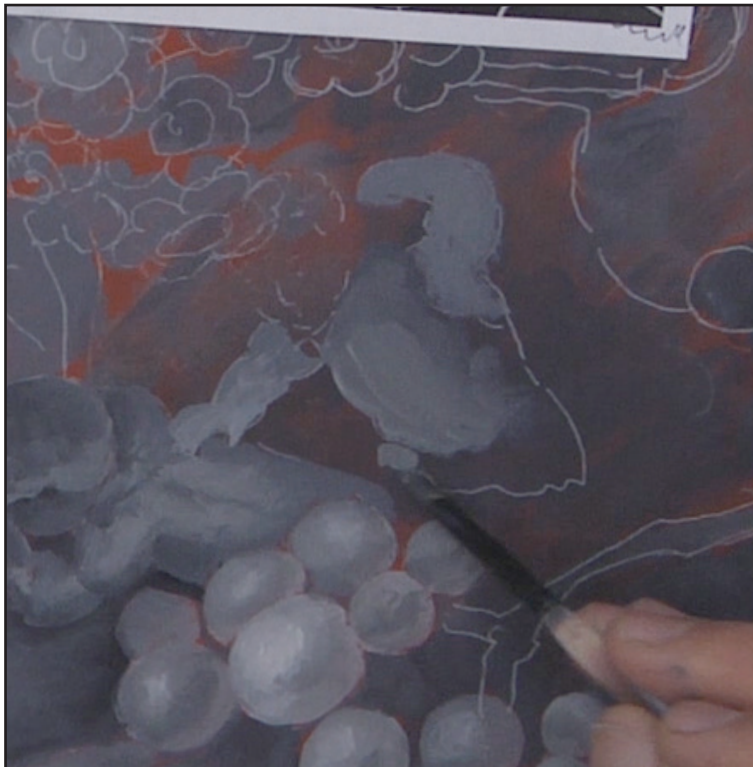


Step 9 Shadows....

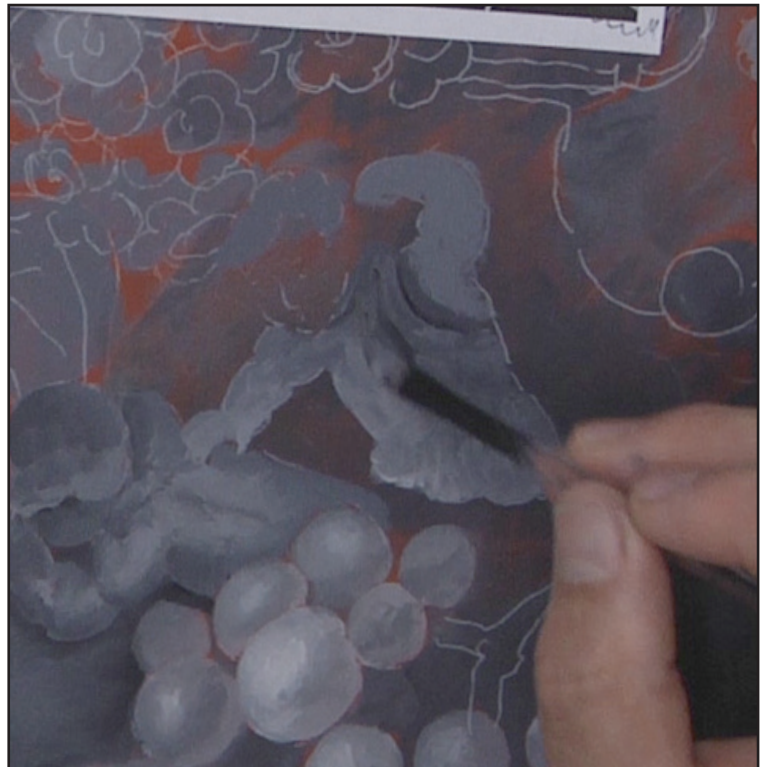
Add the details of the folds in his arm with some 3 darkened with a little 1, to about a 2. Make sure to add to the bottom of his arm for roundness.



Step 10 Darken the 6 with a little 3 to make a 4 or 5 and base in the arms of the next putti.



Step 11 Base his body with a 4 or 5 and then lighten the front with a little 6. Not too much 6 because he has to be darker than the other putti which was a 6.

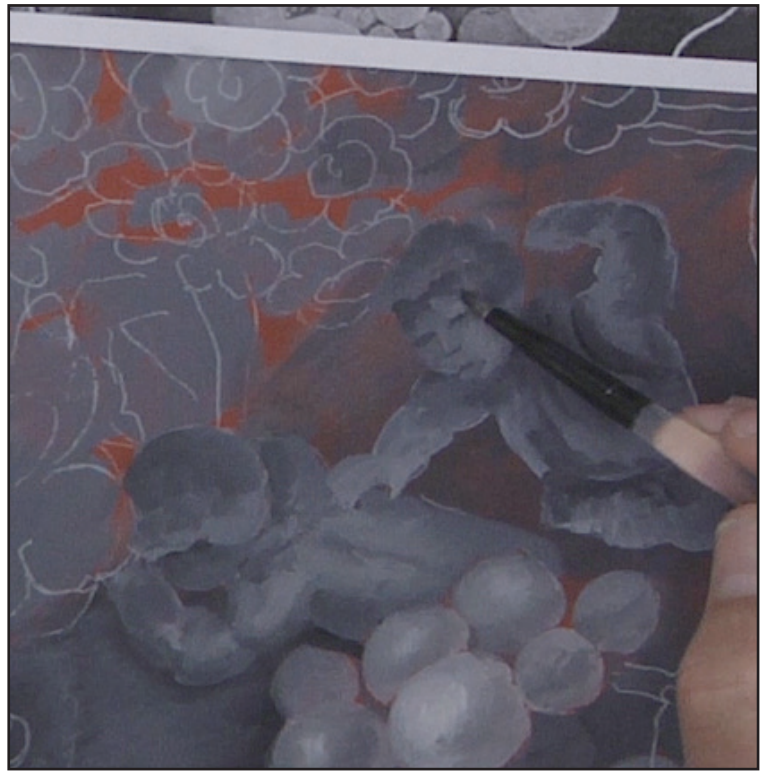


Step 12 Add some shadows to help round his body with some 3 and little 1 to make a 2.



Step 13 Adjustments

Lighten the front edge of his face with some 6. Please do not worry about being perfect, we will be painting this all again to add more details.



Step 14 Face

Using the very small filbert (2) make some suggestive facial features with 3 and a little 1 to make 2 and 3. Darken along hair line.



Step 15 Scumbling details

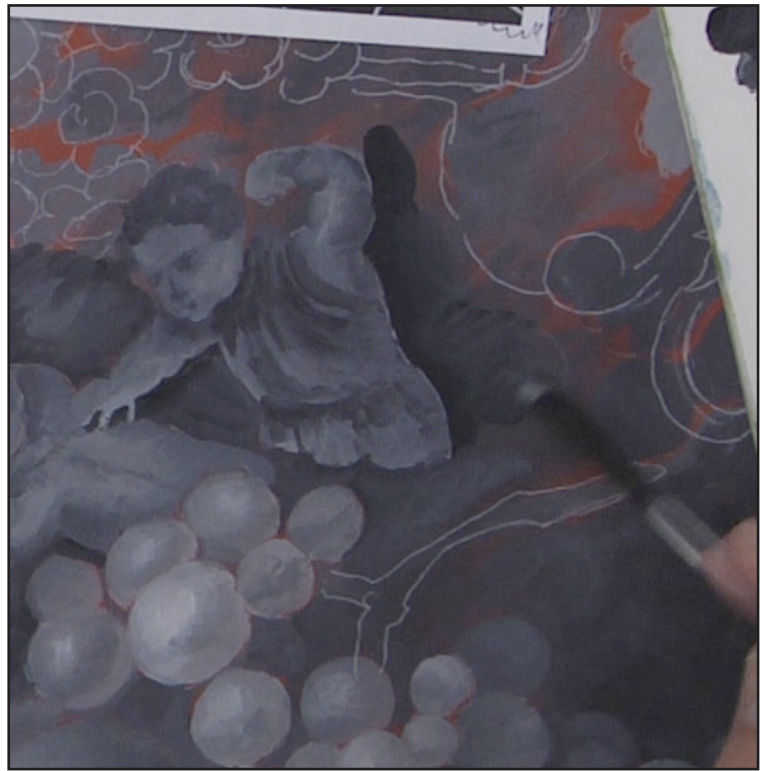
Add some value 2 along top of his hair. Expand the facial features with more 2, then soften with value 4 or 5. Not too much 6, just a little on his chin to lighten.



Step 16 Add some additional shadows under his chin with value 2 to 1. Add some as fold in his fabric. Then lighten with some 6 and add some smaller highlight to the hands and arms.



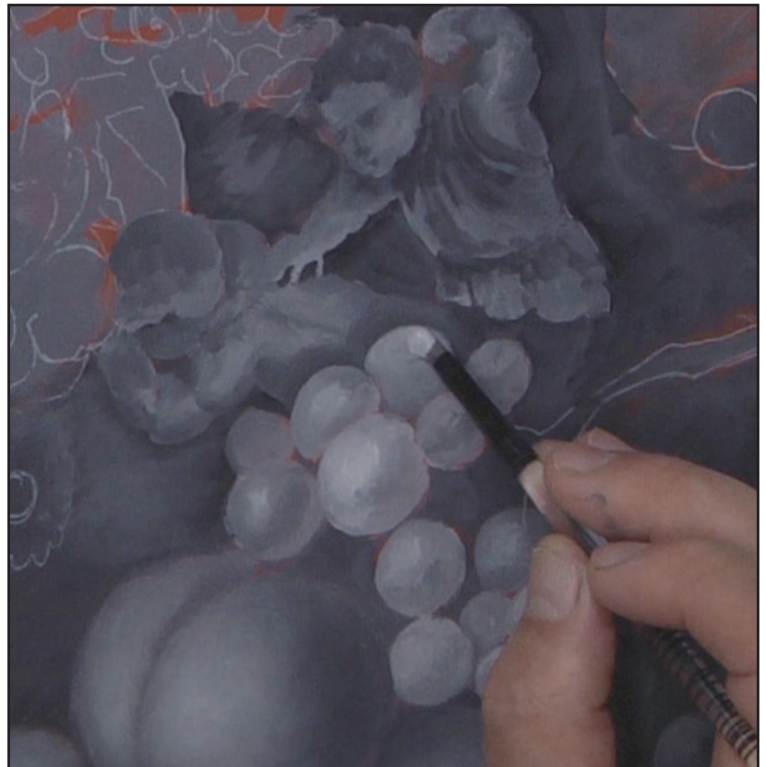
Step 17 Add some darker shadows to the vase with some 2 and 1, then lighten in the center areas with some 4 and 5. Leave the shadows under the putti to make them advance off the surface of the vase.



Step 18 Add some darker 2 and 3 behind the putti to lift him off the vase. Scumble the color a little to add interest the vase.



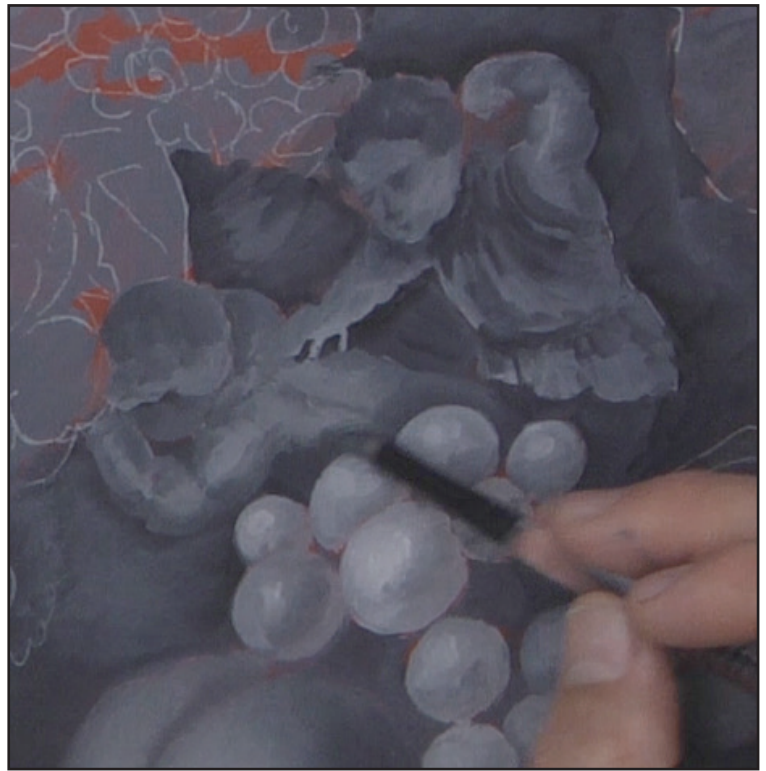
Step 19 Work up around the top of putti using the same values.



Step 20 Restate the grapes and clean up the edges of the grapes so that they will come in front of the putti.



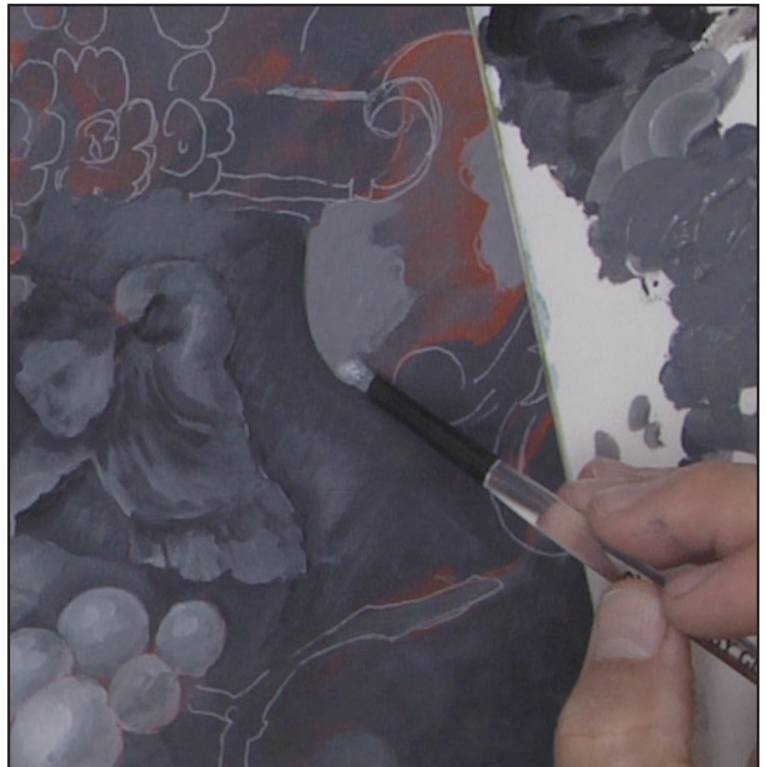
Step 21 After restating the lights on the grapes, add some more lights to the putti in the center of his body and arms. Add further details to make the fold in his arms.



Step 22 Darken up next to the grapes to make the found edges of them and bring them up forward. Restate the value 6 highlights on the putti.



Step 23 Add more value 1, 2 and 3 to the top of the putti on the vase to increase the shadows and lift the putti off the surface of the vase.



Step 24 Add some value 6 to the background leaf behind the vase. This will be lighter than the vase. Keep the edge of the vase with this color very clean (found) edge.



Step 25 Add some leaf veins to the leaf behind the vase. Use some 2 and 3 to make the veins and then soften them



Step 26 Work through the putti again, refining their edges and adding more details. Here I am adding some hair movement with value 6.



Step 27 Begin shaping the top of the vase with some value 4 and 5 and shadowing it with some 2 with a touch of 1.



Step 28 Using some value 2 with touch 1 to “draw” on the acanthus decoration on the handle. Draw on the shadow outline. We will soften this with the next step.



Step 29

Soften the acanthus with some 4 and 5. Stroke the acanthus like it is curling around the handle of the vase. See video for details.

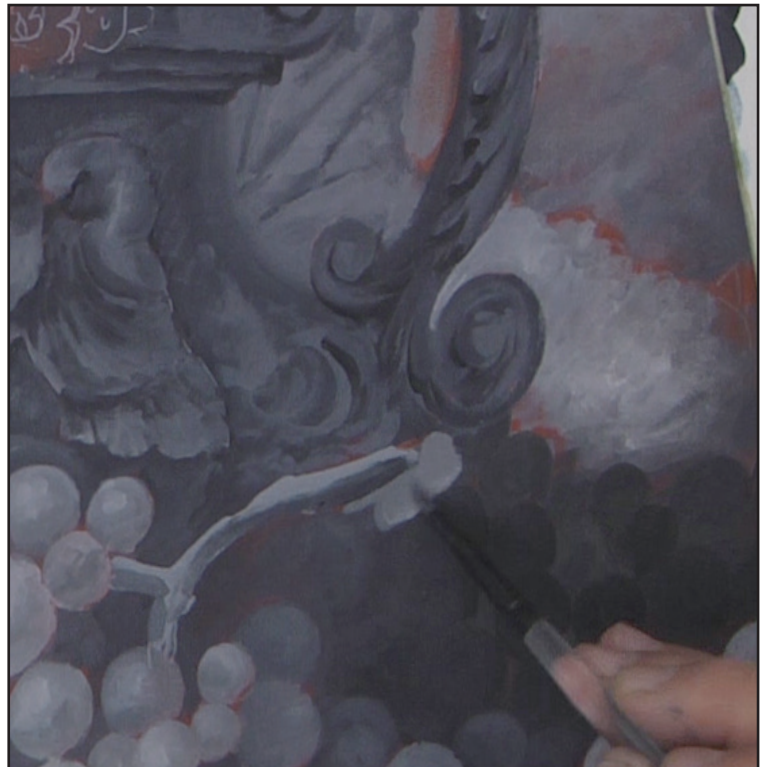


Step 30

Add more details to the handle like the curved “knob” at the bottom of the handle, then using a combination of light and dark values add the movement to the vase in front of the handle.



Step 31 Refine the details on the vase with both light and dark values. Just a little 6 as the light. Keep the

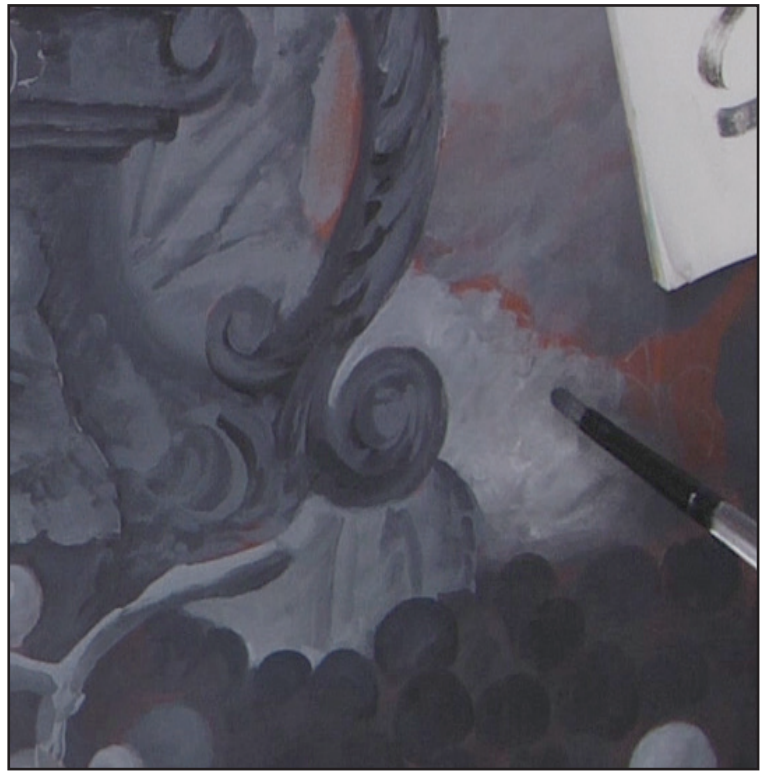


Step 32 Add the grape stem and then the lower leaf detail shown here. Add with value 6 and then shadow with some 4 to 2.



Step 33

Continue working the value 6 down the back behind the darker grapes. This is a lighter leaf behind the darker grapes at it will advance the grapes.



Step 34

Add some value to flower 21 which is behind the leaf we just added and the vase. It is lighter than the leaf. Just break up the values with the light color we will detail another time.



Step 35 Add some additional light to the acanthus leaves on the handle of the vase. Use light value 6. Leave some streaks to show movement.



Step 36 Base the primroses by adding the light centers first. Usually value 6. Then find the dark ones around value 2 and 3. I then slowly start working each one at a time, adding the petals and a touch of dark in the center.



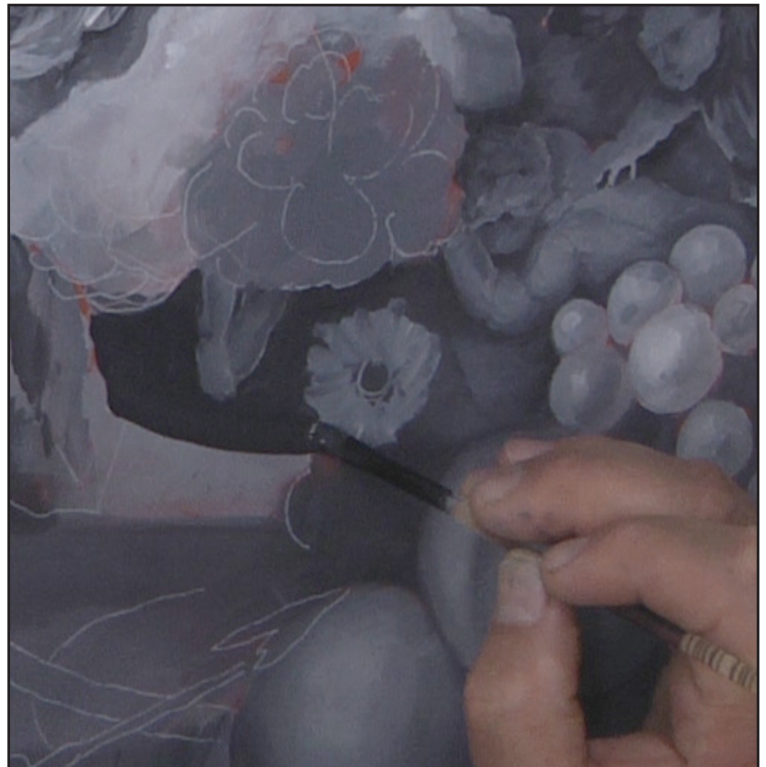
Step 37
Continue working to the back right side using darker values to make the petals. Add values 4 and 5 inbetween the flowers where there will be a leave later.



Step 38
Lighter value 6 for a back flower we will paint later.



Step 39 Add some light 8 , 9 and touch 10 to the area behind the primroses on the left side. We will paint the roses in this area in the next lesson.



Step 40 Flower 25
Some very dark value 2 and 3 to the vase on the left side. I added the small multi petal flower so I do not forget it.... See you next lesson!

Grisailles

If you want to mix your own greys that are shown in this video, please use the chart below. Please note, these mixes ratios are for Heritage colors and will not work with other brands due to the amount and quality of pigments.

Mixes- Use the following ration.. For example Value 6 would be 8 parts White to 1 part Black.

Value 1- Carbon Black	Black (PBk7)
Value 3- Dark Grey Value 3	PBk 7 (2) + PW6 (1)
Value 6- Medium Grey Value 6	PBk 7 (1) + PW6 (8)
Value 8- Light Grey Value 8	PBk 7 (1) + PW6 (30)
Value 10- White	PW6