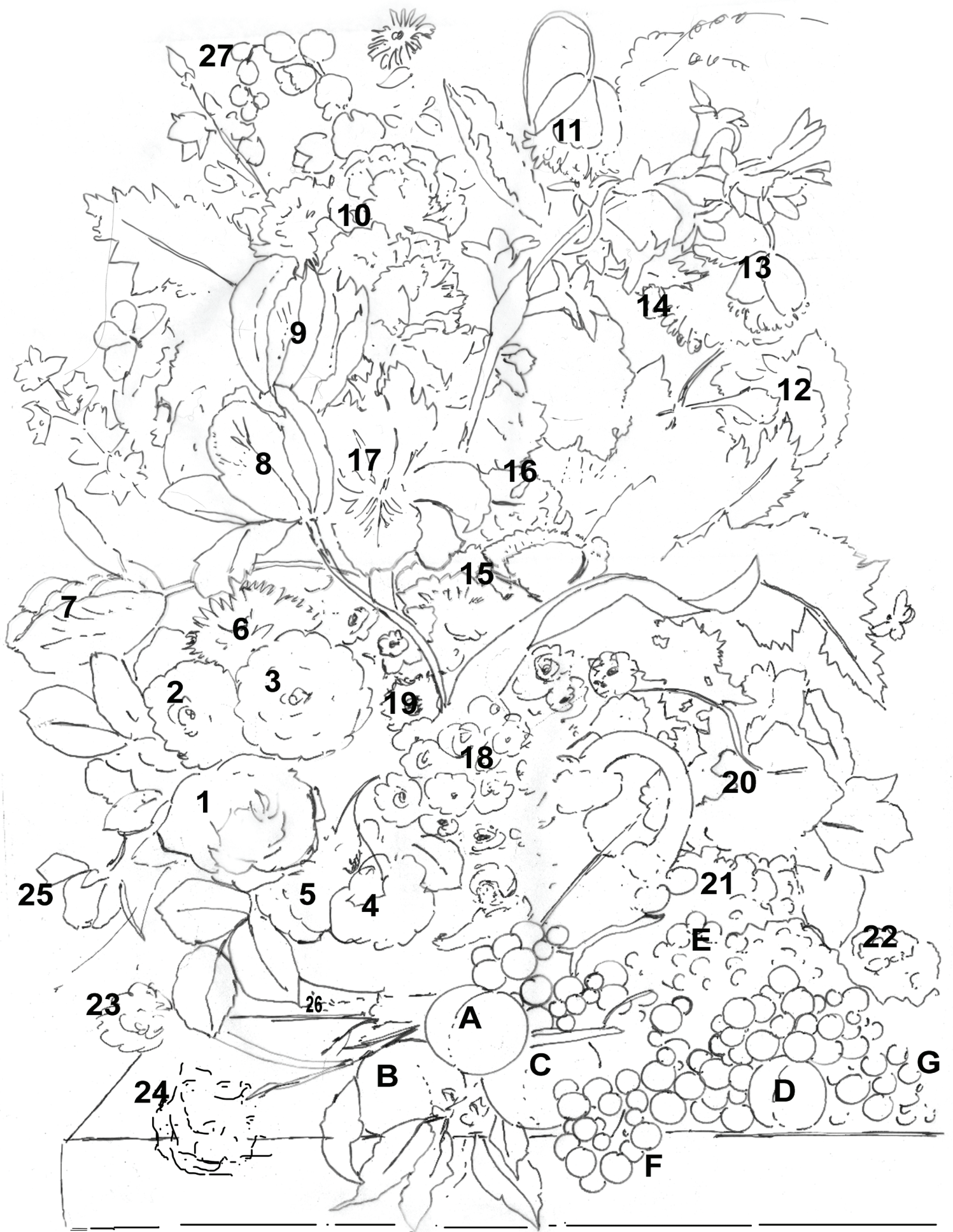


Dutch Masters

Lesson 9- First Color Washes







Step 1 Background Wash

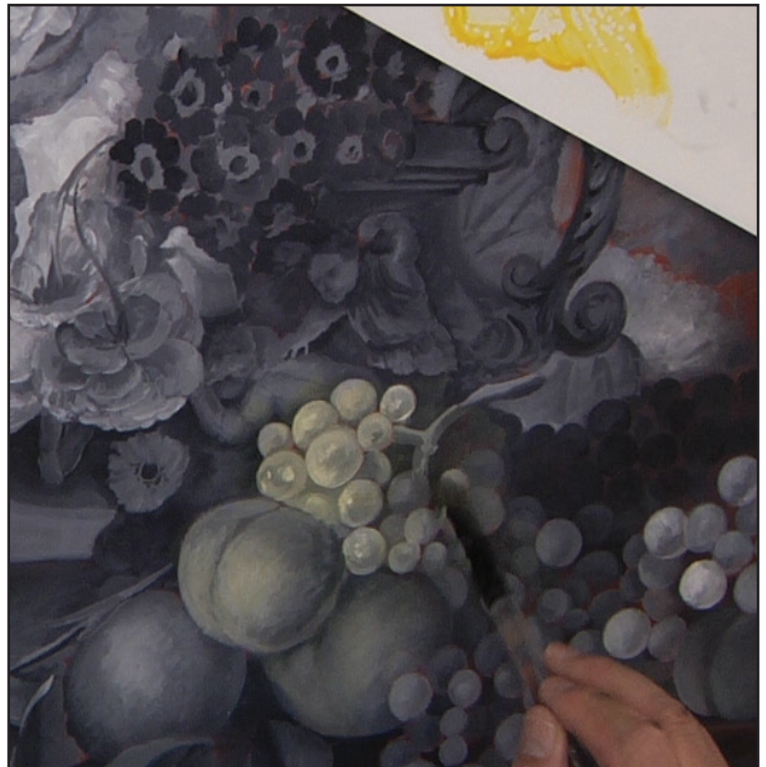
Using a large soft brush give the surface a light even coat of Extender. Mix a value 6 to 5 and go over the right side of the design.



Step 2 Darken the color down to a 3 or even 2 and add to the right side. Let some of the Orange still show through. Soften the values together near the top of the design.



Step 3 Set out your colors for the painting. These are listed in the supply list for the class. I set them out in the Global Palette and added some Extender Medium to slow the drying time.



Step 4 Warm Color Wash

Using Indian Yellow and some extender begin to wash over the light areas of the painting. This was done to warm and brighten the dull greys.



Step 5
Continue washing the Indian Yellow over the main roses in the center of the design to warm and brighten.



Step 6
Using Quinacridone Gold, wash over the shadow area of the rose to create roundness. Use Indian Yellow on light colors and Quin. Gold on the darker areas.



Step 7 Continue to add the Q. Gold to the shadow areas of the painting. I added a thin wash over the putti and vase. Add to create roundness to the peaches and add in shadow areas of grapes.



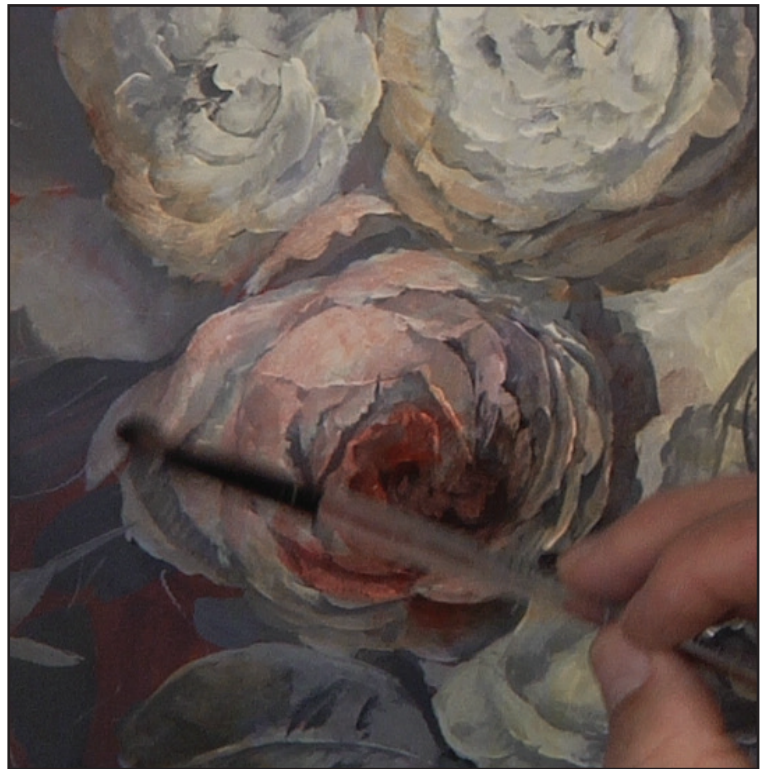
Step 8
Cool the Q. Gold with Red Violet and Black and add to the darker shadow areas of the painting. This will warm them a little, and also bright just a little.





Step 9 First Color Washes

Brush mix some Naphthol Red Light with touch Red Violet and Brown Madder and wash over the center of the rose with a little Extender. I used # 6 filbert for the washes.



Step 10 Soften the red with a little white and then wash lightly over the remainder of the rose.



Step 11 Using a smaller filbert or flat, edge the brush in white and make the petals edges. Then add a little of the lighter color in the petals. Don't work too hard at this. We will repeat several times.



Step 12 Continue working the petals down and into the center of the rose. Retint with some reds if needed.



Step 13
Darken the right side of the rose with Red Violet and touch Black, then tint with some reds and begin to shape the petals. Not too light on the right side.



Step 14
Continue to lighten the top and left side of the rose with more additions of white.



Step 15 Tint the back rosebud between flowers 1 and 2 (no number) with some reds and then edge the small brush with some white to suggest the petal edges. Keep simple, it is a back flower.



Step 16 Wash a little Hansa and Yellow Oxide with Extender over flower 3 and then use the small filbert with some white to add the petal edges and begin to lighten the flower.



Step 17 Continue working the petals, adding some additional Yellow Oxide and Hansa as a soft shadow color, then lightening the petals with some additions of white.



Step 18 For the right side of the flower (shadow side) add a touch of yellows, black and Red Violet to make a soft grey. Wash over as a shadow and then lighten a little with some white.



Step 19 Some petals have very clear white tips. Add those with the chisel of the brush and then soften the shadows with the greys.



Step 20 Continue to work around the flower making the color slowly lighter with additions of white.



Step 21

Add a touch of yellows, black and Red Violet to make a soft grey. Lighten the grey with some white and then add to the shadow of the rose.



Step 22

Using the chisel of the brush, add the white tips to the petals on the right side of the rose.



Step 23

Begin to lighten flower 2 with small additions of white.



Step 24

Add the white tips to some of the petals with the chisel and then lighten the center of the petal with some grey.



Step 25
Make an orange from Naphthol Red Light and Hansa, add touch Quin. Gold and tint over flower 5 near the stems.



Step 26
Tint the petals with soft red, Naphthol Red Light and touch white. Then begin to make them lighter with some white. Edge some petals with white.



Step 27
Wash flower 5 with red and white, soft pink, then begin to lighten the edges and the petals.



Step 28
Hansa Yellow with touch Black to make a green. Using the chisel, restate the stems and the sepals on the back of the rose.



Step 29

Use some of the yellows to begin tinting the leaves. Add some touches of various yellows to vary the leaves.



Step 30

Add some Ultramarine Blue on the brush and thin with touch Extender. Begin to work this over the leaves, which will turn them green.



Step 31

Lighten the yellows with a touch of white and add some lights to the center of the leaves. Add some shadows with the blues.



Step 32

Finally I added some blues to the small flower so I do not forget this little one by the end of the painting. Keep casual, we will paint later. See you in the next lesson.

Grisailles

If you want to mix your own greys that are shown in this video, please use the chart below. Please note, these mixes ratios are for Heritage colors and will not work with other brands due to the amount and quality of pigments.

Mixes- Use the following ration.. For example Value 6 would be 8 parts White to 1 part Black.

Value 1- Carbon Black	Black (PBk7)
Value 3- Dark Grey Value 3	PBk 7 (2) + PW6 (1)
Value 6- Medium Grey Value 6	PBk 7 (1) + PW6 (8)
Value 8- Light Grey Value 8	PBk 7 (1) + PW6 (30)
Value 10- White	PW6